

Instruction Sheet

Subject: High Altitude Orifice Kit Instructions

Models affected: SR42, SR52, SR62, ESG35T Gas Fryers

The orifice kit **MUST** be installed by a Factory Authorized Servicer. Failure to use a Factory Authorized Servicer will **VOID** the warranty. Call 1-800-551-8633 or your local Factory Authorized Servicer to schedule installation of the kit.

Follow these instructions to replace the orifices.

Use the chart below to ensure that the correct kit and orifice size is installed for the type of fryer, gas and altitude.

ALTITUDE	SR142 NAT	SR142 LP	SR152 NAT	SR152 LP	SR162 NAT	SR162 LP	ESG35T NAT	ESG35T LP
2000'- 3999'	Kit # 8263568 2.71MM #36	Kit # 8263571 1.61MM #52	Kit # 8263573 2.40MM #42	Kit # 8263575 1.51MM #53	Kit # 8263577 2.40MM #42	Kit # 8263579 1.51MM #53	Kit # 8263581 2.08MM #45	Kit # 8263584 1.35MM
4000'- 5999'	Kit # 8263569 2.64MM #37	Kit # 8263571 1.61MM #52	Kit # 8263573 2.40MM #42	Kit # 8263576 1.40MM #54	Kit # 8263577 2.40MM #42	Kit # 8263580 Orifice # #54	Kit # 8263582 2.06MM #46	Kit # 8263585 1.32MM
6000'- 7999'	Kit # 8263570 2.53MM #39	Kit # 8263572 1.51MM #53	Kit # 8263574 2.26MM #43	Kit # 8263576 1.40MM #54	Kit # 8263578 2.26MM #43	Kit # 8263580 1.40MM #54	Kit # 8263583 1.99MM #47	Kit # 8263586 1.26MM
LP MIX 70B/30P	N/A	Kit # 8263571 1.61MM #52	N/A	N/A	N/A	N/A	N/A	N/A

1. Remove the burner shield by removing the four (4) screws attaching the shield to the fryer (see Figure 1).

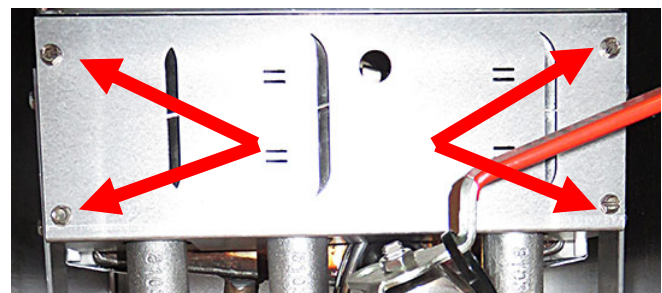


Figure 1

2. Loosen the two (2) bolts on the top of each burner (see Figure 2).
3. Remove the burners by sliding the burners up and push towards the rear of the fryer, through the keyholes (see Figure 3).
4. Remove the orifices (see Figure 4).
5. Apply loctite to the new orifices and attach to the manifold. Be careful to not cross-thread the orifices. Do not over tighten the orifices.
6. Insert the burners by aligning the bolts into the keyholes and then sliding down into place over the orifices.
7. Tighten the burner bolts loosened in step 2.
8. Replace the shield removed in step 1.
9. Attach the shutters as shown using two of the long screws (see Figure 5). Adjust so that the shutter is approximately $\frac{1}{4}$ " from the bottom of the burner (see Figure 6). Additional adjustments may be necessary after ignition of the fryer to produce a good flame; prevent howling and extinction of the flame or flashback.
10. When finished, check for leaks by turning on the gas and use a soapy solution to see if it bubbles.

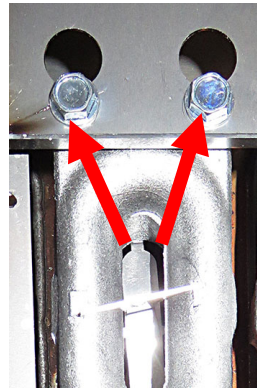


Figure 2

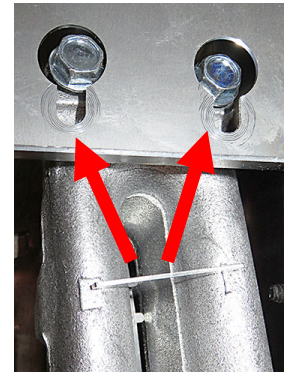


Figure 3

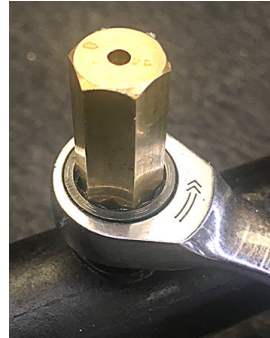


Figure 4

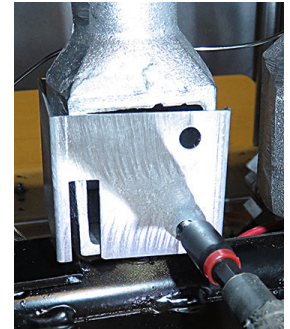


Figure 5

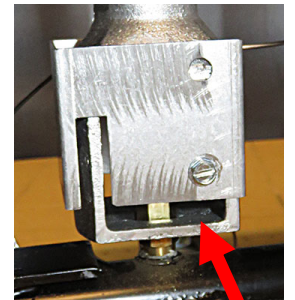


Figure 6